

# NSSE Engagement Indicators

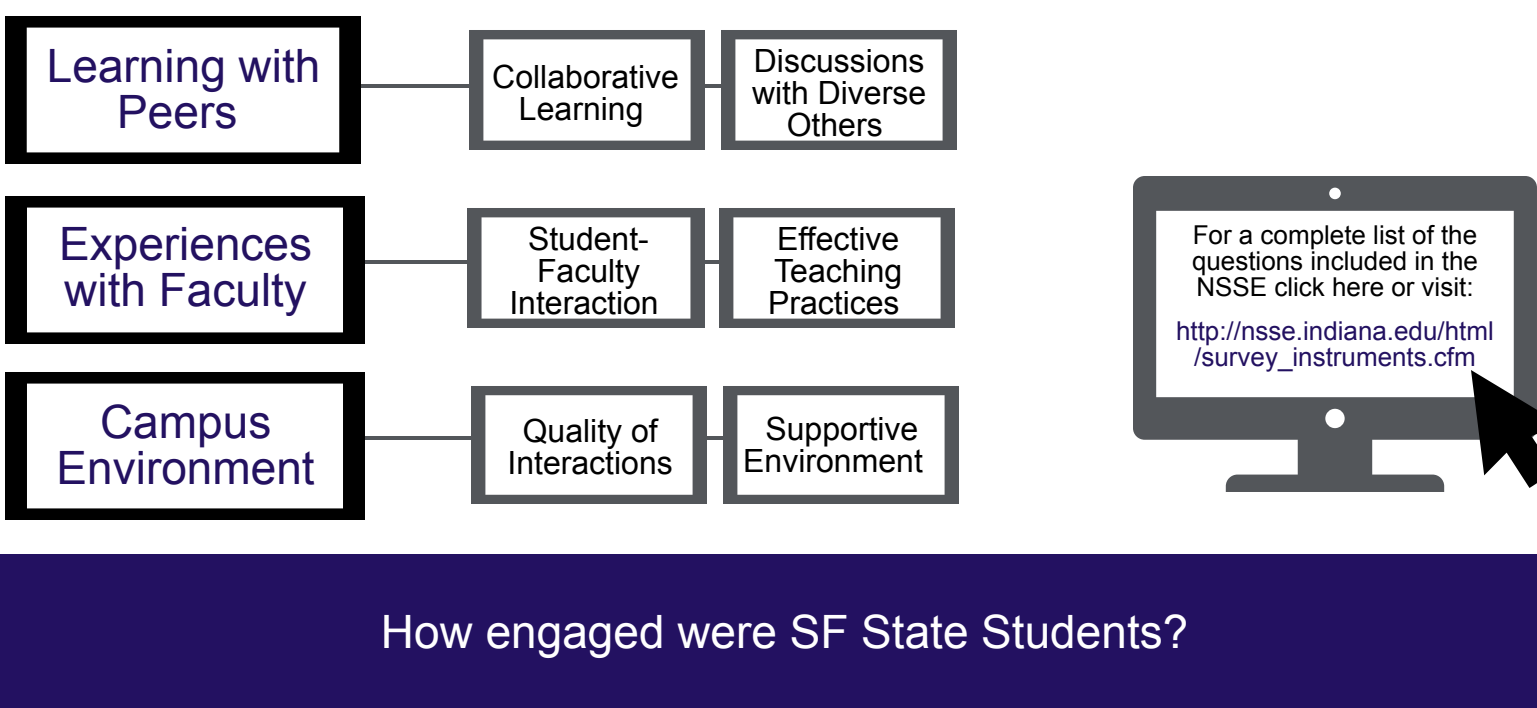
The **National Survey of Student Engagement (NSSE)** measures student engagement across ten **Engagement Indicators (EI)**.

Each EI provides valuable information about a distinct aspect of student engagement by summarizing students' responses to a set of related survey questions.

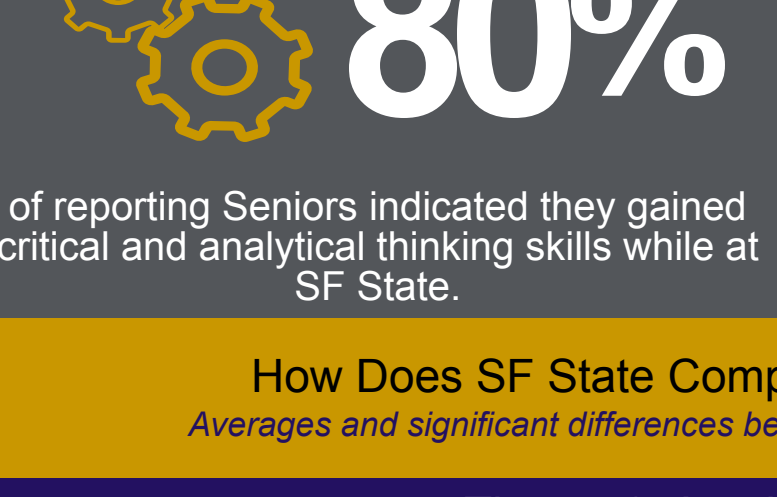
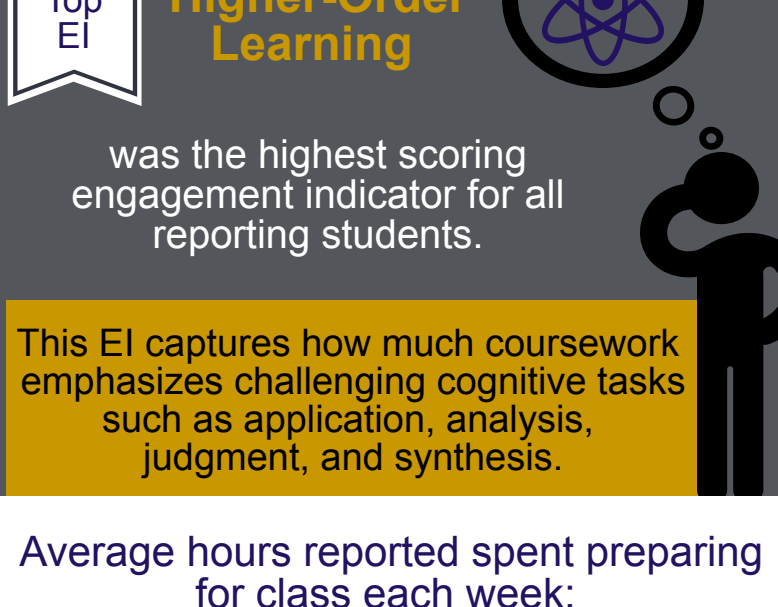
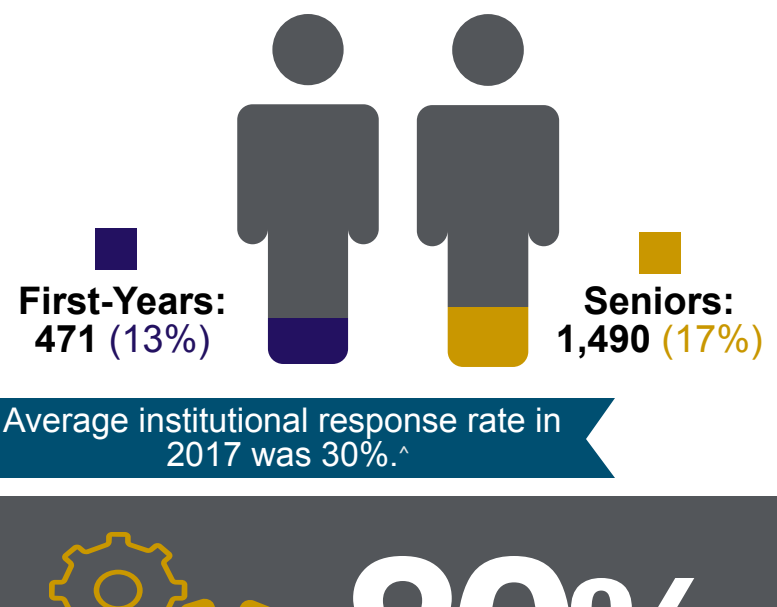
Institutions receive scores of **0-60** on each indicator.

SF State's average scores on each indicator were evaluated against three comparison groups:  
 Other CSU campuses  
 Institutions in the Carnegie class (10k+ public)  
 NSSE 2016 and 2017 cohort.

In the NSSE, each EI has a corresponding theme:



## How engaged were SF State Students?

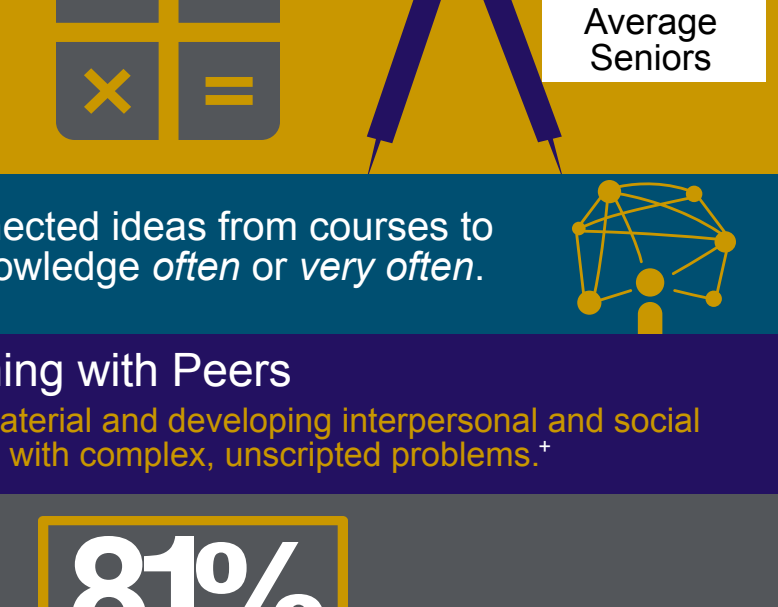
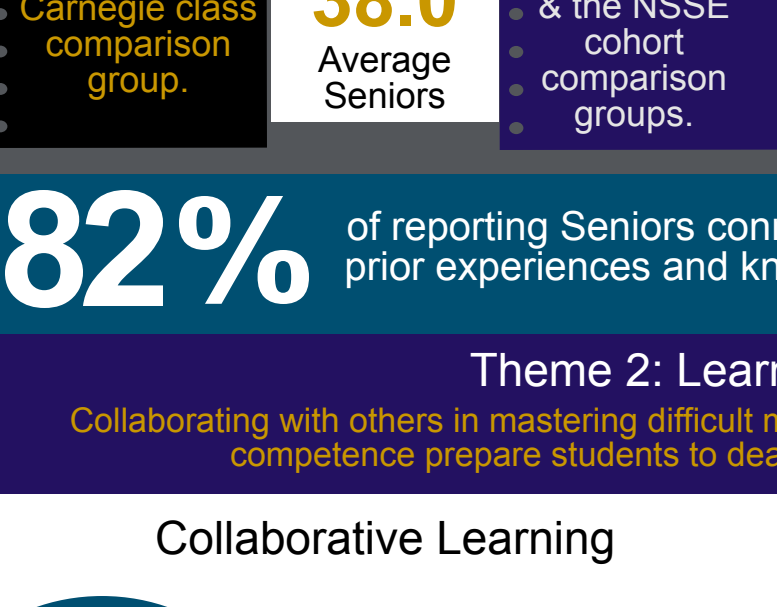
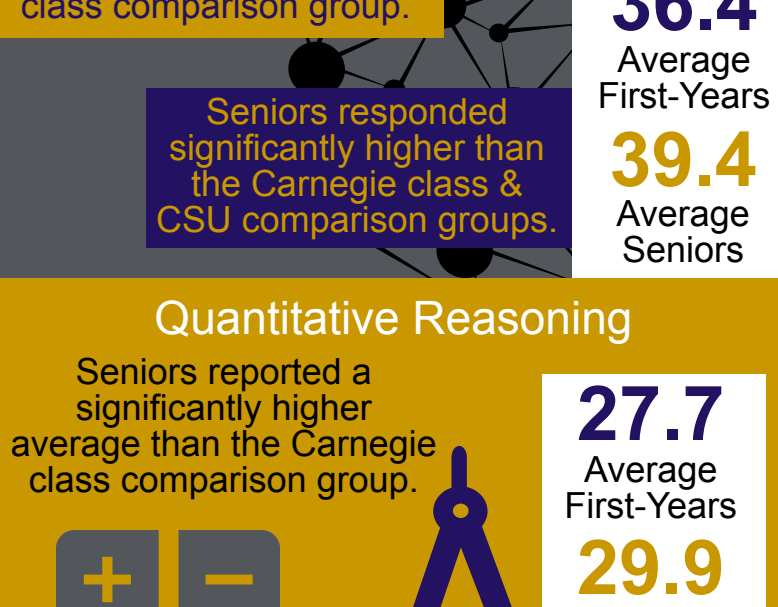
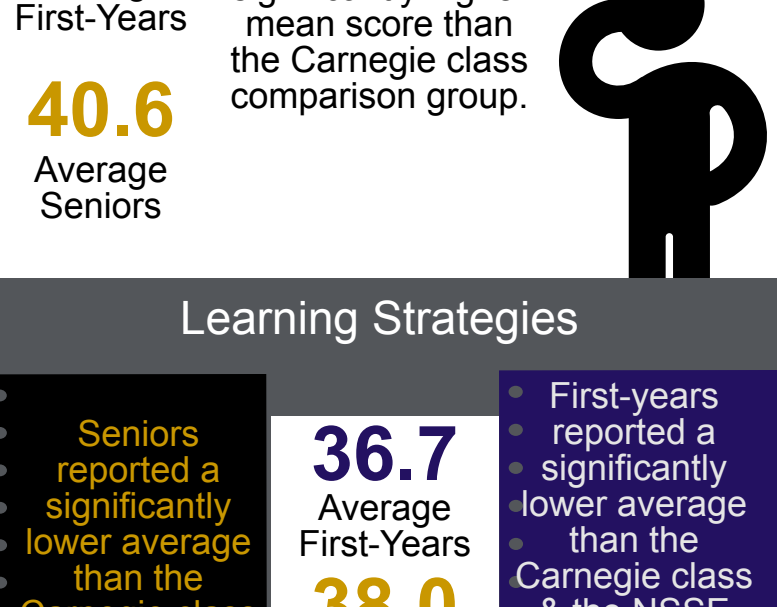


## How Does SF State Compare to Similar Institutions?

Averages and significant differences between SF State and comparison groups

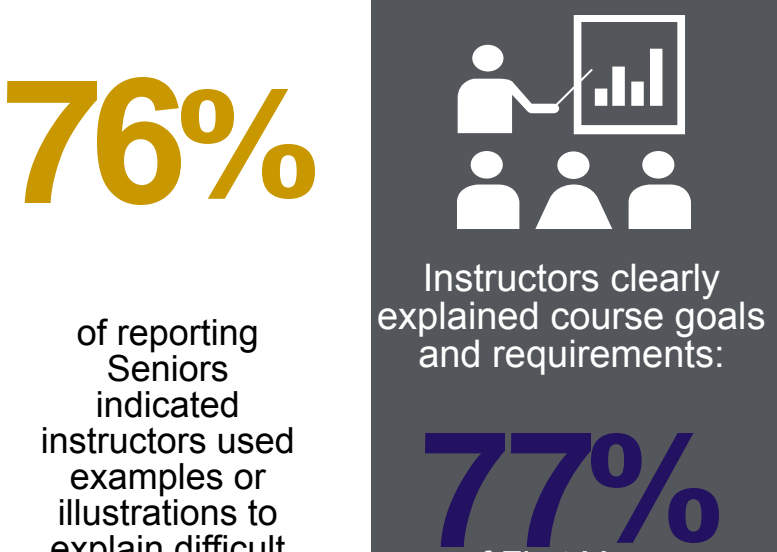
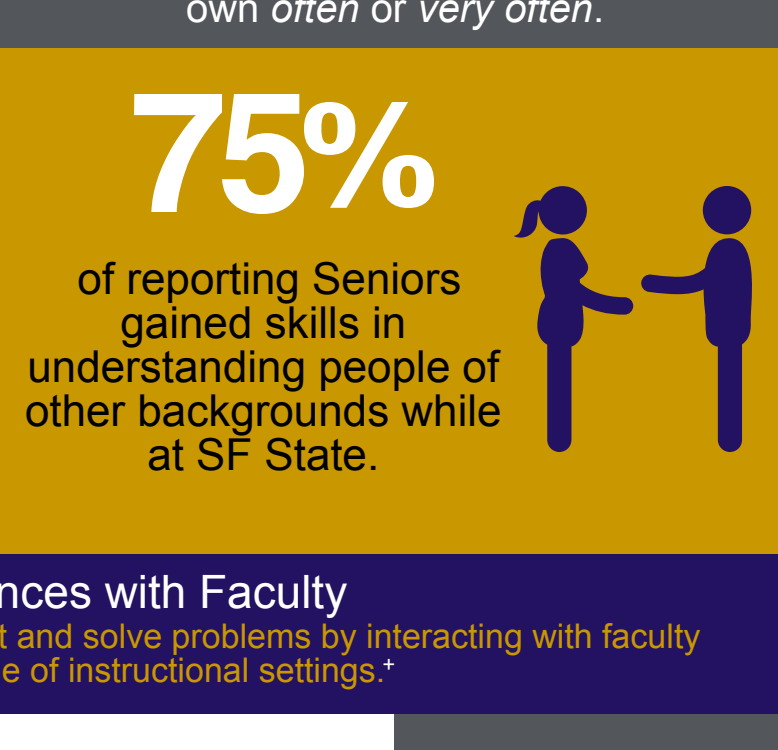
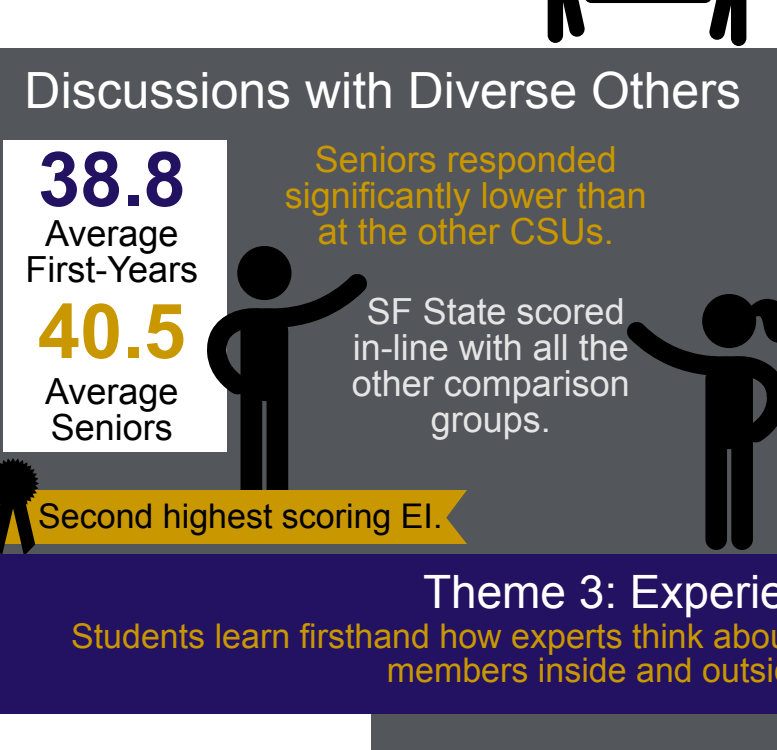
### Theme 1: Academic Challenge

Colleges and universities promote student learning by challenging and supporting them to engage in various forms of deep learning.<sup>\*</sup>



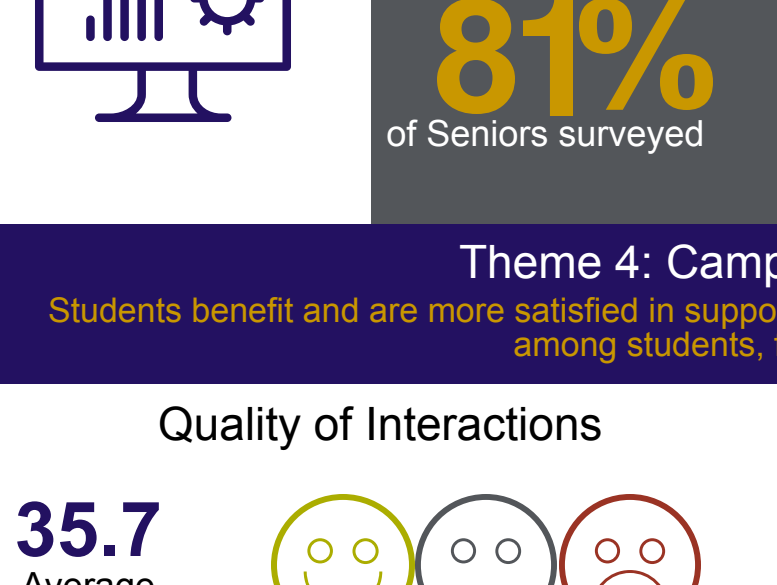
### Theme 2: Learning with Peers

Collaborating with others in mastering difficult material and developing interpersonal and social competence prepare students to deal with complex, unscripted problems.<sup>\*</sup>



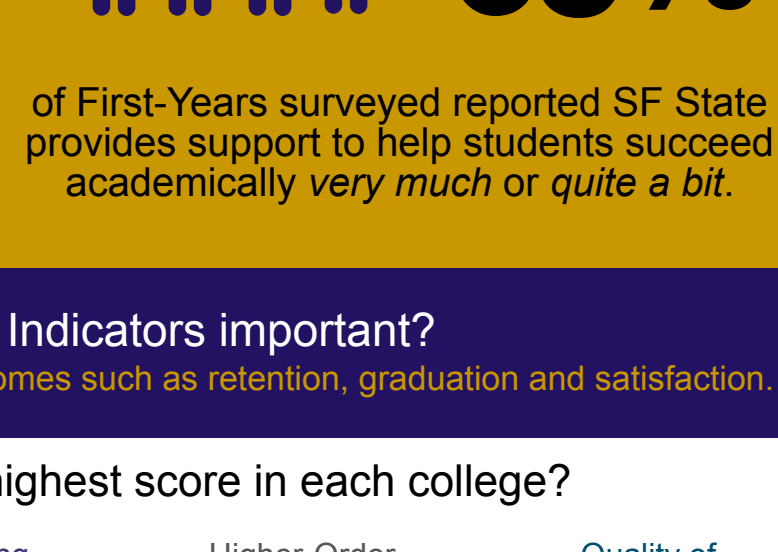
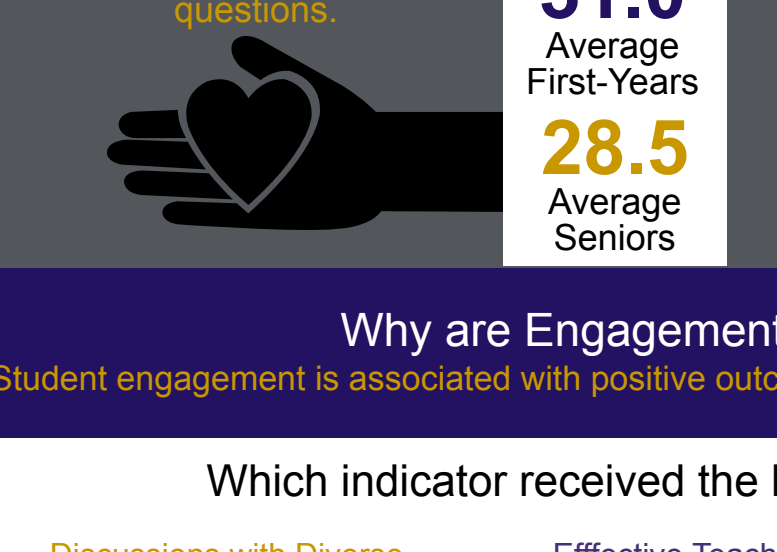
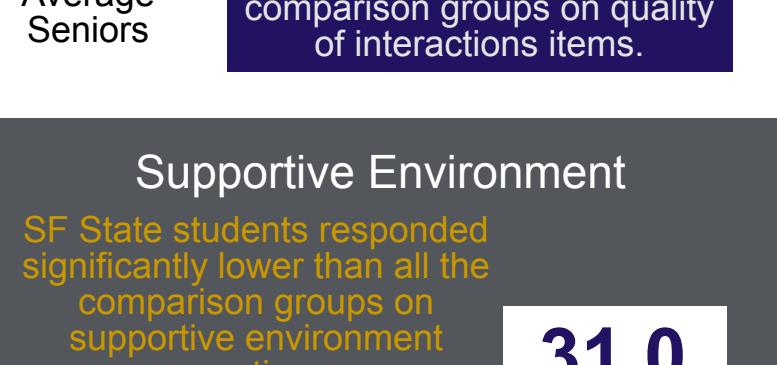
### Theme 3: Experiences with Faculty

Students learn firsthand how experts think about and solve problems by interacting with faculty members inside and outside of instructional settings.<sup>\*</sup>



### Theme 4: Campus Environment

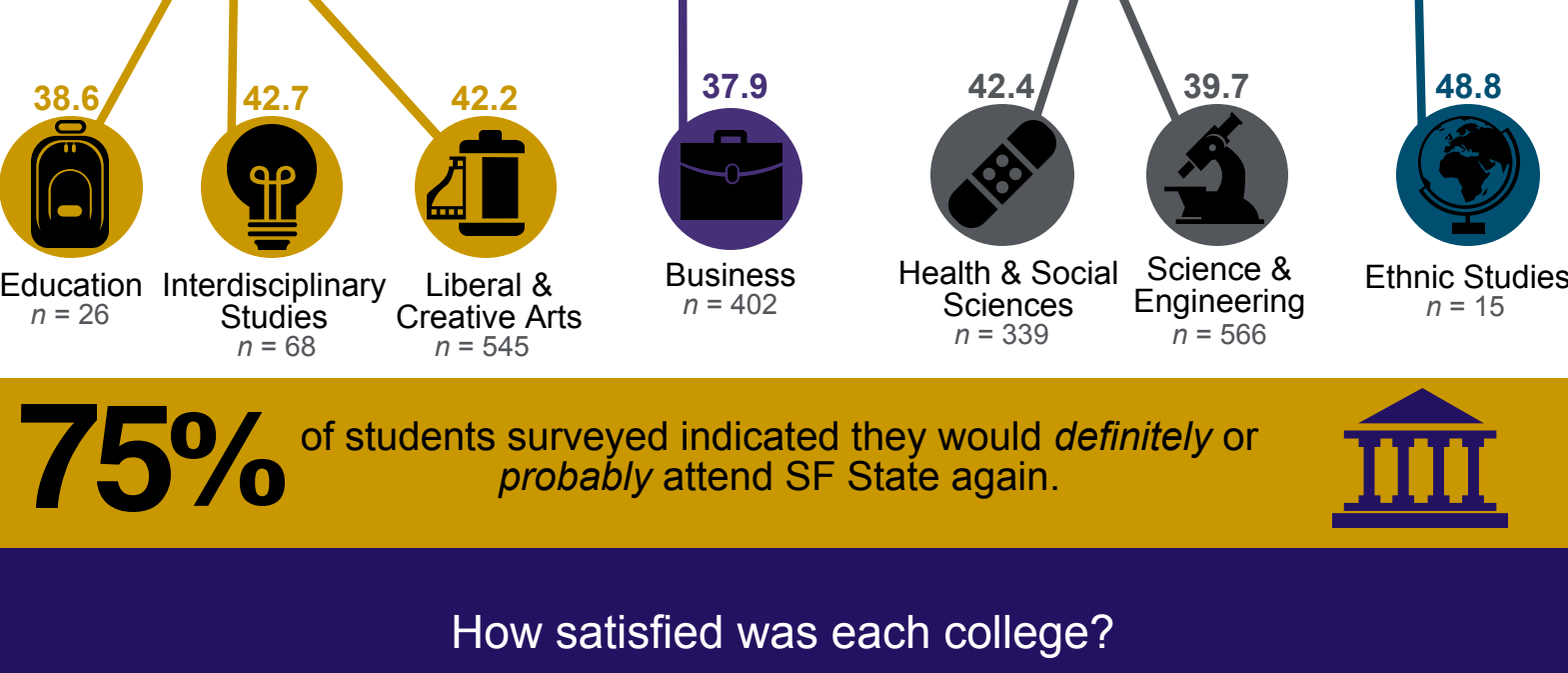
Students benefit and are more engaged in supportive settings that cultivate positive relationships among students, faculty, and staff.<sup>\*</sup>



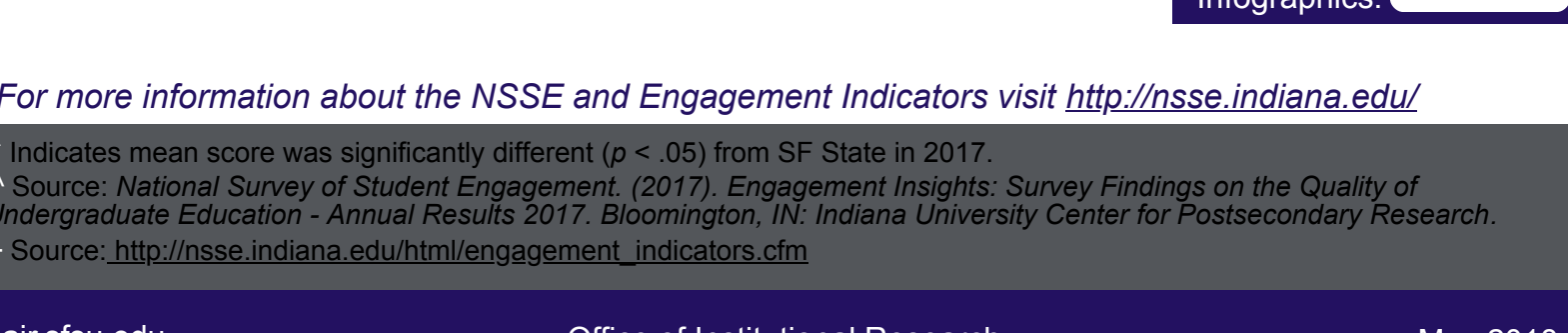
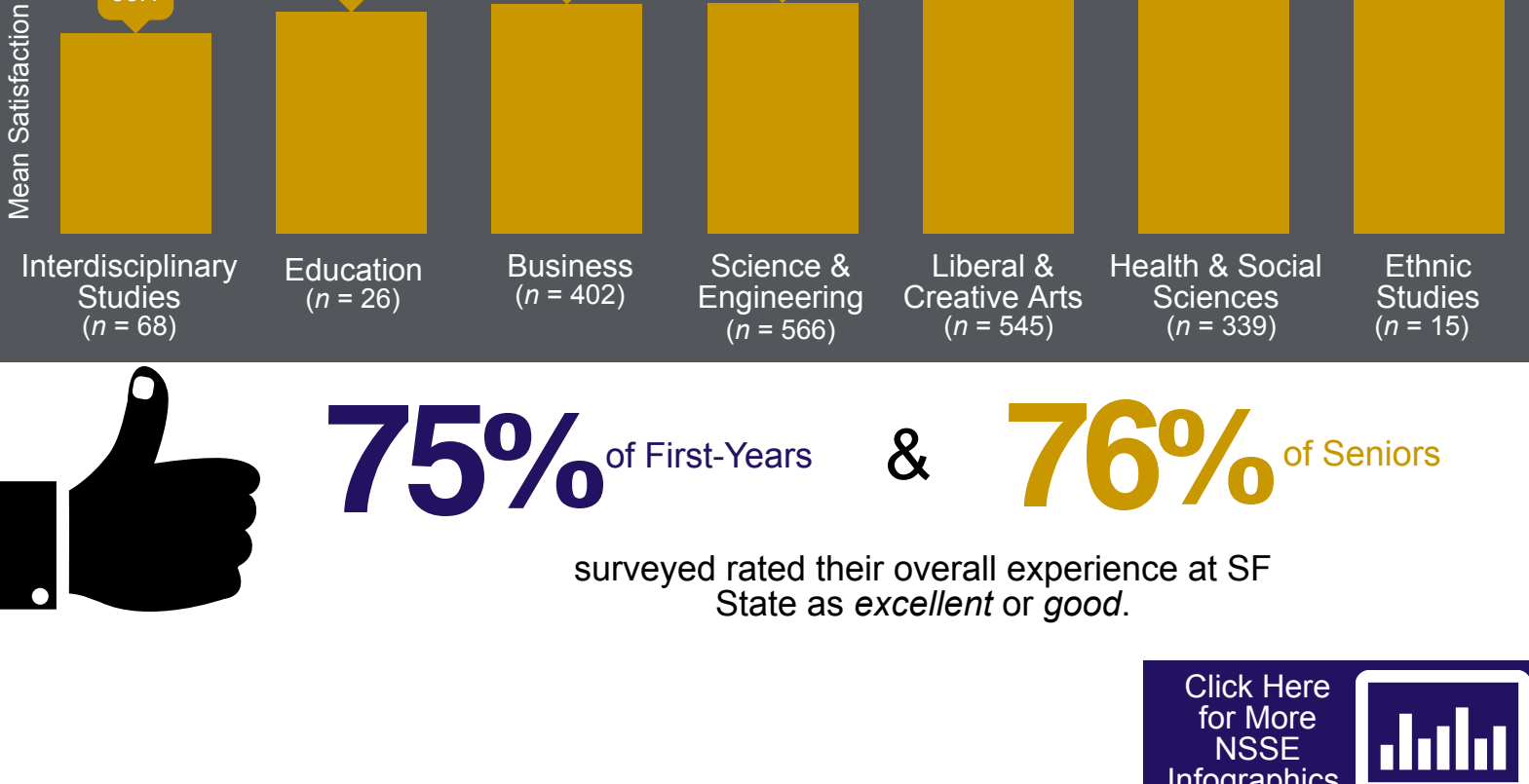
## Why are Engagement Indicators important?

Student engagement is associated with positive outcomes such as retention, graduation and satisfaction.

### Which indicator received the highest score in each college?



### How satisfied was each college?



\* Indicates mean score was significantly different (p < .05) from SF State in 2017.  
<sup>^</sup> Source: National Survey of Student Engagement. (2017). *Engagement Insights: Survey Findings on the Quality of Undergraduate Education - Annual Results 2017*. Bloomington, IN: Indiana University Center for Postsecondary Research.  
<sup>+</sup> Source: [http://nsse.indiana.edu/html/engagement\\_indicators.cfm](http://nsse.indiana.edu/html/engagement_indicators.cfm)